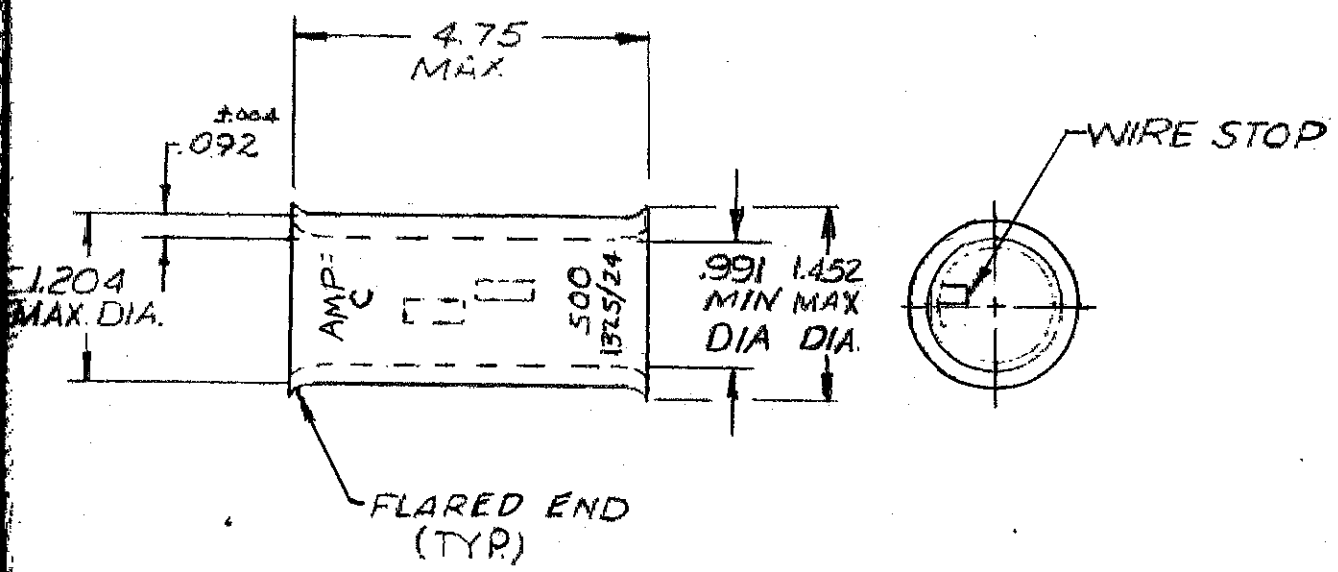


MADE IN AMERICAN PROJECTION

LDC  
G 14 A

UNPUBLISHED COPY NOT TO BE REPRODUCED NOR PUBLISHED WITHOUT WRITTEN PERMISSION OF AMP INCORPORATED

REVISIONS					
REV.	DESCRIPTION	DATE	BY	CHKD.	APP.
0	NRS 71-0921		J.B.		
A	ADDED RR STAMPING P7367	LD	12/17/74	wr21m	
B	REVISED PER 063A-0637-01	1/10/02			lrc



UNLESS SPECIFIED TOLERANCES: DECIMAL ANGLES: ±.008 ±.5° MATERIAL: COPPER (ASTM B-75) FINISH: AN PLATE (MIL-T-10727)	2-11-72 Jm. En...	<b>AMP</b>		
	2-11-72 En...	WIRE SPLICE AMPower-BUTT WIRE SIZE: 500MCM		
	2-11-72 En...	<b>A</b>	00779	53089
	OTHER APPL.	PARTS	SHEETS 1 OF 1	